



SHA TIN
COLLEGE

SCHOOL PROFILE

2025
2026



CEEB Code: 670884 IB Code: 001206 UCAS Code: 47844

3 Lai Wo Lane, Fo Tan, Shatin, Hong Kong

+ (852) 2699 1811

+ (852) 2695 0592

shatincollege.edu.hk

HigherEd@shatincollege.edu.hk

PURPOSE

We challenge our students to make meaningful contributions to the world.

Principal

Ms. Carol Larkin

Vice Principal / IB Diploma Co-ordinator

Ms. Kellie Fagan

Head of Careers and Higher Education

Mr. David Stott (dzs@shatincollege.edu.hk)

Higher Education Counsellor

Ms. Gigi Lam (gigi.lam@shatincollege.edu.hk)

Ms. Sherley Zhao (sherley.zhao@shatincollege.edu.hk)



Founded by the
English Schools Foundation in
1982



An **international,
co-educational**
school



1,266
students



30
nationalities



Accredited by the
**International
Baccalaureate (IB)**



148
graduates in
Class of 2025



159
students in current
senior year class



All students are
taught through
English



IBMYP
from Year 7 to 9



**IGCSE/
GCSE**
from Year 10 to 11



**IBDP/
IBCP**
from Year 12 to 13



School Calendar
189 days



Students are
NOT ranked

IB COURSES OFFERED (FOR CLASS OF 2026)

1

HL SL Literature
HL SL Language and Literature

SL Literature and Performance
SL Self-Taught Literature

**Studies in Language
and Literature**

2

HL SL Mandarin
HL SL French

SL Ab Initio Language

**Language
Acquisition**

3

HL SL Business Management
HL SL Economics
SL Environmental Systems and Societies
HL SL Geography

HL SL History
HL SL Philosophy
HL SL Psychology

**Individuals
and Societies**

4

HL SL Biology
HL SL Chemistry
SL Environmental Systems and Societies
HL SL Design Technology

HL SL Computer Science
SL Food and Technology
HL SL Physics
HL SL Sports, Exercise and Health Science

Sciences

5

HL SL Analysis and Approaches

HL SL Applications and Interpretations

Mathematics

6

HL SL Film Studies
HL SL Music
SL Literature and Performance

HL SL Theatre
HL SL Visual Arts
HL SL Another subject (Group 3 or 4)

The Arts

Sha Tin College (STC) follows the International Baccalaureate 7-point grade scale: 7 = Excellent 6 = Very Good 5 = Good 4 = Satisfactory 3 = Mediocre 2 = Poor 1 = Very Poor

IB DIPLOMA RESULTS

(Class of 2025)

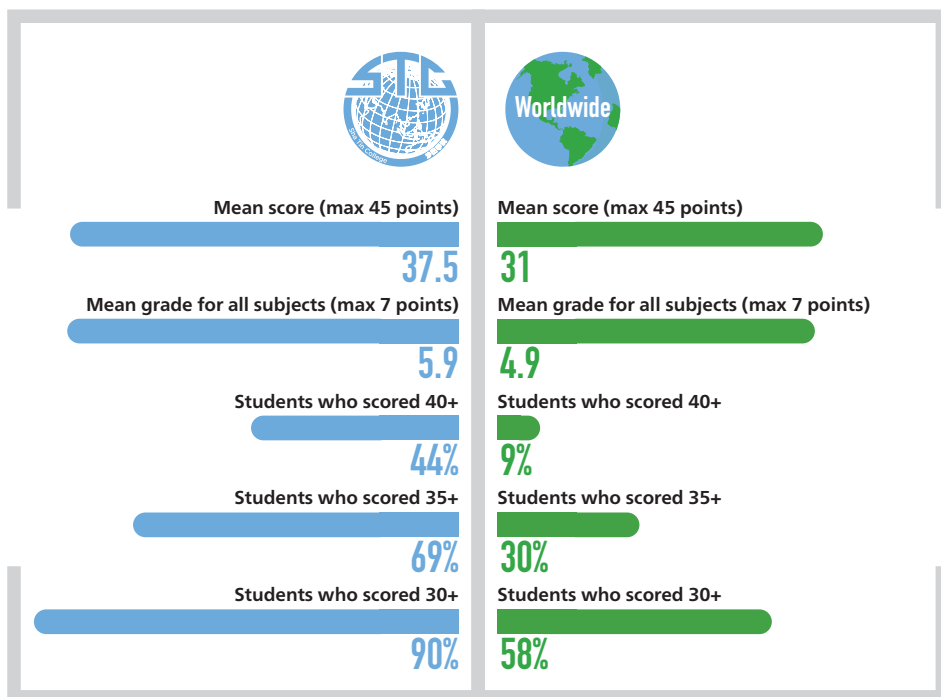
Sha Tin College is an inclusive school, catering for students of all abilities.

IB Diploma
Candidates

140

Students
achieving
IB Diploma

99%



Worldwide data is from the IB Statistical Bulletin (May 2025)

COLLEGE MATRICULATION

(Class of 2025)

DESTINATION MAP (148 STUDENTS)

